

W
SAE

CENTERTM

INSTALLATION AND CARE GUIDE

WILSON[®]
AUDIO

WA DEALERS



Wilson Audio® is a registered trademark of Wilson Audio Specialties, Inc.

Wilson Audio (Stylized)®, WAMM®, Master Chronosonic®, WAMM Master Subsonic®, Chronosonic XVX®, Alexx®, Alexx V®, Alexia®, Alexia V®, Sasha DAW®, Yvette®, Sabrina®, SabrinaX®, Alida®, TuneTot®, LōKē®, Thor's Hammer®, Pedestal®, Wilson Audio Acoustic Diode®, Rel-Cap®, AudioCap®, AudioCapX®, WATCH®, IsoBase®, Wilson Audio Authentic Excellence®, Wilson Audiophile Recordings LLC®, and Special Applications Engineering® are registered trademarks of Wilson Audio Specialties, Inc.

Chronosonic XVX 4 Seasons™, Sasha V™, Alida CSC™, Mezzo CSC™, WASAE Center™, WATCH Center™, Submerge™, WATCH Dog™, ActivXO™, Excellence in All Things™, It's About Time™, WilsonGloss™, and QuadraMag™ are trademarks of Wilson Audio Specialties, Inc.

This manual was produced by the Wilson Audio Engineering and the Marketing Departments. The information contained herein is subject to change without notice.

Current Revision 1.0. If you are in need of a more recent manual, please contact your Dealer or download one at www.wilsonaudio.com.

The information in this manual is the sole property of Wilson Audio Specialties, Inc. Any reproduction, in whole or in part, without the express written permission of Wilson Audio Specialties, Inc., is prohibited. No material contained herein may be transmitted in any form or by any means, electronic or mechanical, for any purpose, without the express written permission of Wilson Audio Specialties, Inc.

Copyright © 2023 Wilson Audio Specialties, Inc.

The logo features the letters 'S', 'A', and 'E' in a light blue, 3D-rendered font. The letters 'W' and 'X' are positioned above the 'A', forming the acronym 'WAX'. Below this, the full name 'SPECIAL APPLICATION ENGINEERING' is written in a dark red, all-caps, sans-serif font.

S **W** **X** **A** **E**
SPECIAL APPLICATION ENGINEERING

WILSON AUDIO SPECIALTIES

2 WASAE CENTER INSTALLATION AND CARE GUIDE

CONTENTS

SECTION 1—WASAE CENTER ASSEMBLY	5
SECTION 1.1—BOX CONTENT CHECKLIST	6
SECTION 1.2—WASAE CENTER TOOL KIT	7
SECTION 1.3—CHOOSING THE BEST LOCATION	7
SECTION 2—SETUP OF WASAE CENTER	9
SECTION 2.1—INSTALLING THE SPIKES	10
SECTION 2.2—CORRECTING FOR THE TIME DOMAIN	12
SECTION 2.3—CONNECTING WASAE CENTER TO AN AMPLIFIER.	13
SECTION 2.4—REMOVING THE PROTECTIVE FILM	14
SECTION 2.5—INTEGRATING THE WASAE CENTER.....	14
SECTION 2.6—IMAGE HEIGHT	15
SECTION 2.7—VENT PLUG.....	16
SECTION 2.8—RESISTORS	17

SECTION 2.9—TAKING CARE OF YOUR SPEAKER..... 18

SECTION 3—TECHNICAL INFORMATION 21

SECTION 3.1—SPECIFICATIONS 22

SECTION 3.2—GRAPHICAL DIMENSIONS 23

SECTION 3.3—WASAE CENTER IMPEDANCE CURVE 24

SECTION 3.4—WASAE CENTER PHASE CURVE 25

SECTION 4—WARRANTY 27

LIMITED WARRANTY..... 28

CONDITIONS 28

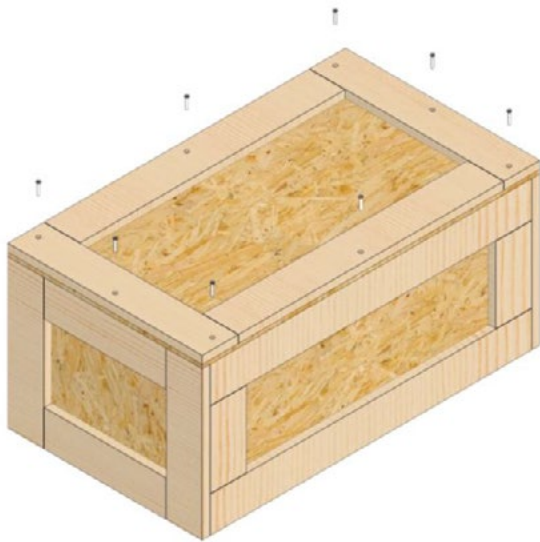
REMEDY..... 28

WARRANTY LIMITED TO ORIGINAL PURCHASER 29

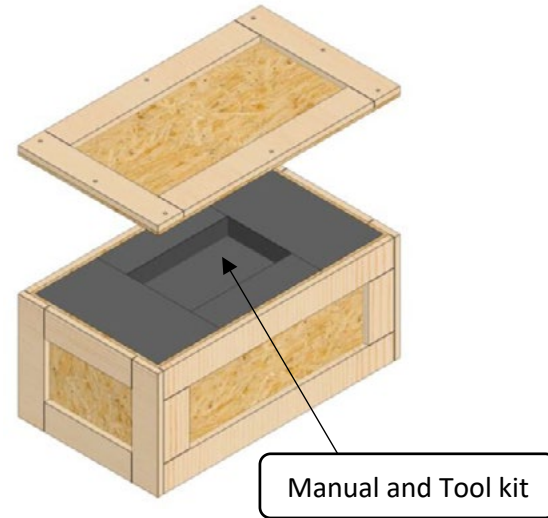
DEMONSTRATION EQUIPMENT..... 29

MISCELLANEOUS 29

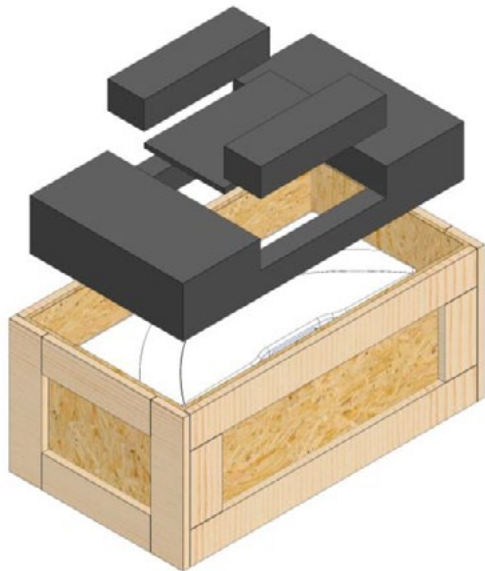
1. Remove screws as shown in image.



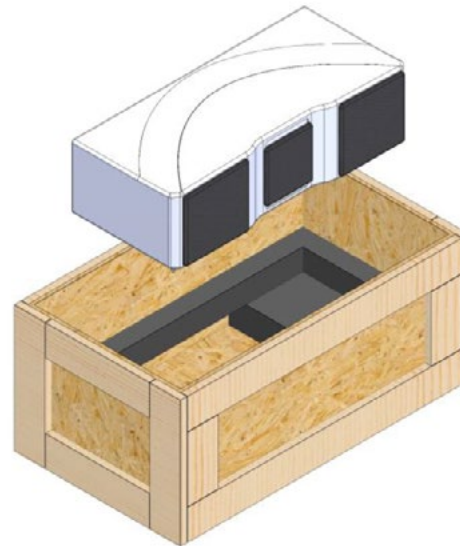
2. Remove and set aside crate lid, manual and tool kit.



3. Remove foam pieces.



4. Remove speaker. Use caution to prevent damage.

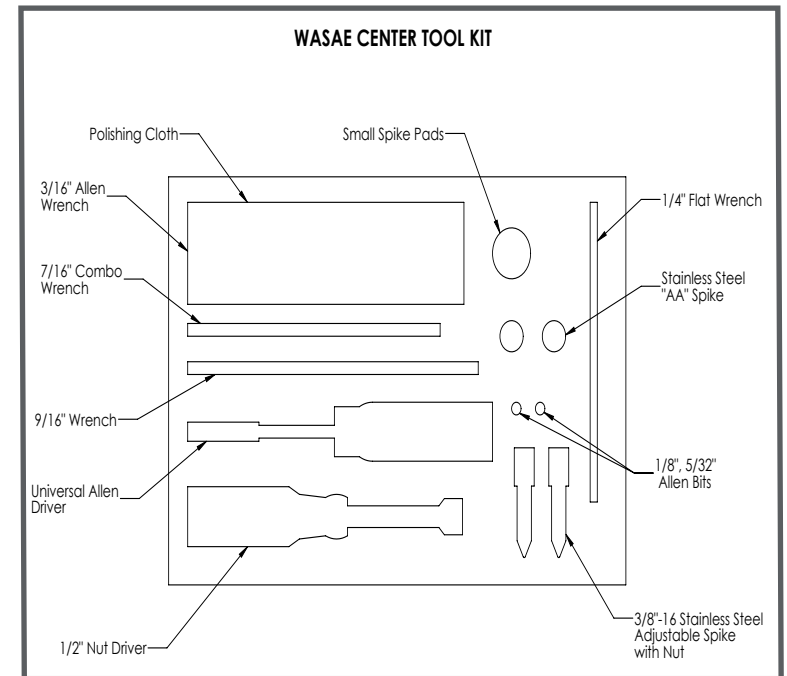


SECTION 1—WASAE CENTER ASSEMBLY

Section 1.1—Box Content Checklist

Now that you have unpacked your **Wilson Audio Special Application Engineering** (WASAE) Center, you can inventory all the additional items found in the boxes.

- WASAE Center Manual
- Warranty Registration Form
- (1x) Polishing Cloth
- (2x) 3/8"-16 Stainless Adjustable Spike with Nut
- (2x) "AA" Stainless Spike
- (4x) Small Aluminum Spike Pad
- 1/2" Nut Driver (*binding posts*)
- 7/16" Combo Wrench (*"AA" spike*)
- 9/16" Wrench (*adjustable spike nut*)
- 1/4" Flat Wrench for Adjustable Spike tip (*spike install/removal*)
- 3/16" Allen Wrench (*spike set screws*)
- Universal Allen Driver
- 1/8" Allen Bit (*resistor panel screw*)
- 5/32" Allen Bit (*driver screws*)
- Full-Line Brochure
- Wilson Audiophile Recordings leaflet



Section 1.2—WASAE Center Tool Kit

Please take the time before you attempt to setup up your WASAE Center to review the contents of your WASAE Center Tool Kit. Set these items in an accessible area as you will need them during the setup process. Reference the list and graphic on the previous page.

You will be using tools and parts in this Kit throughout the installation process. Keep the WASAE Center Tool Kit close by.

Section 1.3—Choosing the Best Location

WASAE Center has been developed to be used as a center channel in a multi-channel system. This speaker is designed to work effectively when installed on bookshelves, credenzas, counters, in cabinets, and on desk tops. Included with your purchase of a new WASAE Center is the setup expertise of your Authorized Wilson Audio Dealer. Your Dealer will install your speaker to provide the best possible performance for your unique listening space. If you want to learn more about the Wilson Audio Setup Procedure (WASP), which can form a good basis of understanding for how to place your Wilson Audio loudspeakers, you can do so by scanning the QR code on the left and viewing the short WASP video.





SECTION 2—SETUP OF WASAE CENTER

Section 2.1—Installing the Spikes

Note: To avoid damaging the WASAE Center’s painted surface, please remove any jewelry such as rings, watches, necklaces, and bracelets during the installation process.

Like all ultra-high performance loudspeakers, WASAE Center will sound far more lifelike if the time domain is properly corrected. In a compact design such as WASAE Center, this can be effectively achieved by angling the baffle in correct relationship to the listener. When the time domain is properly adjusted in a WASAE Center installation, every aspect of sound reproduction is improved—including tonal accuracy and beauty, transient speed, soundstage and imaging, as well as a sense of dynamic contrast.

WASAE Center uses two types of Spikes to achieve correct alignment of the speaker to the listener. The first is the “AA” Spike and the second is the Adjustable Spike, which incorporates a locking nut. These two sets of Spikes together form the time-domain and leveling system for WASAE Center.

1. There are four threaded receptacles located on the bottom of WASAE Center. It is shipped with threaded plugs (1/2” All-Thread Set-Screws) that maintain a gas-tight seal if the Spikes are not installed. Remove the four 1/2” All-Thread Set-Screws if Spikes will be used to install your speaker (3/16” Allen Wrench).
2. Locate the two sets of Spikes in the Tool Kit. Stage the “AA” Spikes and Adjustable Spikes next to the WASAE Center.





3. Sitting comfortably in the listening position, look carefully at the WASAE Center and use the graphics provided on page 10-11. Take note of the amount of “reveal” on the top of the enclosure seen from the listening position to determine which Spikes will be installed in the front and back threaded receptacles to achieve the correct alignment of the system to the listener.
4. If there is “too much reveal” then install the Adjustable Spikes into the front two threaded receptacles, and the two “AA” Spikes into rear two receptacles.
5. If there is “too little reveal” then install the Adjustable Spikes into the rear two receptacles, and the two “AA” Spikes into the front two receptacles.
6. At this point, leave the nut on the Adjustable Spikes loose enough to allow the Spikes to be adjusted freely by hand.

Note: Please note that WASAE Center’s Spikes are somewhat sharp. Wilson Audio supplies Spike Pads that optionally sit beneath the Spikes if there is a need to protect the surface below.

Section 2.2—Correcting for the Time Domain

Time Domain Setup

Wilson Audio engineers have devised a simple and effective method for achieving the correct time domain alignment for each installation with WASAE Center. The correct baffle angle in relationship to the listener is achieved visually. In the case of WASAE Center, baffle angle and correct time domain alignment are interchangeable. Wilson Audio's engineers determined that if there is a correct amount of "reveal" on the top plane of WASAE Center's cabinet, as seen from the listening position (see pages 10-11), it is a reliable indicator for correct time domain alignment between the WASAE Center and the listener.

This is accomplished via the following process:

1. Make sure that your WASAE Center is properly positioned between your main front left and right loudspeakers and the Spikes are loosely installed in the correct threaded recepticals.
2. The listener should be in the listening position, their posture relaxed as they would be when listening to their system normally.
3. View the reveal of the top plane of WASAE Center's cabinet. Refer back to page 10-11 graphics.
4. Thread the Adjustable Spikes into the enclosure, at the same rate together, until the correct reveal is seen from the listening position. The Adjustable Spike has number markings on the side for reference.
5. Check the solidity of WASAE Center on its Spikes. If one of the Adjustable Spikes is out

of level, WASAE Center will rock.

6. Lay a level horizontally on the top plane of WASAE Center. Check the level.
7. You may rotate the Spike tips in place by hand or with the 1/4" Flat Wrench tool provided in the Tool Kit. Lengthen the appropriate Spike until WASAE Center is level.
8. Fine-tune the Adjustable Spikes until WASAE Center is level side-to-side, and providing a solid, level mount with no rocking.
9. Recheck to make sure that WASAE Center is still positioned for correct reveal.
10. Using the supplied 9/16" wrench for the Adjustable Spikes and the 7/16" wrench for the "AA" Spikes tighten the "AA" Spikes and the nuts installed on the Adjustable Spike. Tighten the nuts such that they are locked and secure against the bottom of the cabinet. Take care to avoid moving the WASAE Center out of position.

Do not over-tighten Spikes.

Section 2.3—Connecting WASAE Center to an Amplifier

High quality "five-way" Binding Posts come standard with the WASAE Center to make it simple to connect to your amplifier with any cable you use, including spade and banana-style connectors. Attach the main output from the amplifier to the Binding Posts located at the rear of the WASAE Center. Make sure the Binding Post nut is threaded down until it stops before connecting a banana-style termination. Use your fingers to tighten the Binding Posts when using a spade-style termination.

Do not over tighten Binding Posts.

Section 2.4—Removing the Protective Film

To protect the paint finish of the WASAE Center during final manufacture, shipment, and setup in your listening room, we have applied a removable layer of protective film over the finish. We recommend that this film be left on until the installation of the speaker is finished. Remove the film by following this procedure:

1. Ensure the speaker surface is room temperature before removing the protective film.

Note: Removing the protective film when the speaker surface is cold can damage the paint surface.

2. Slowly remove the film from the top down, large sections at a time, gently pulling the film outward.

Note: Tearing the film aggressively can damage the paint.

3. Take care in removing the protective film near edges and corners to prevent paint damage in these areas.

Note: The Protective film should not be left on the painted surface for extended periods of time nor exposed to heat sources and/or direct sunlight.

Section 2.5—Integrating the WASAE Center

The next step in the setup process is to integrate the center channel into the multi-channel system.

1. If possible, place the WASAE Center between the main speakers and even with the main speakers front baffle inner edges.
2. Double check to ensure the WASAE Center is connected with correct polarity. **RED** is the positive **(+)** terminal and **BLACK** is the negative **(-)** terminal.

3. Follow the AV Processor instructions for SPL level adjustment. Adjust the SPL level for the WASAE Center and all speakers in the system so they balance. Do not be surprised if the WASAE Center requires a different adjustment than the main left / right channels.
4. Follow the AV Processor instructions for speaker distance adjustment. Measure the distance from the listener's ear, as they sit relaxed in the listening position, to the WASAE Center tweeter baffle directly under the tweeter diaphragm. Input this information along with the distances from the listener's ear to all the other speakers in the system.
5. Put on a multi-channel audio track or movie scene with which you are familiar.
6. Listen for the integration of the WASAE Center with the main speakers when playing this track. As the audio moves across the three front speakers, listen for a smooth transition from one speaker to the next. You should not hear any voids in the sound stage.
7. Make 1" then 1/2" then 1/4" changes in front-to-back location until you find the WASAE Center location that offers the best sonic integration.

Section 2.6—Image Height

Check the image height. Does the dialogue of a movie have the correct height? Is it too low or too high?

If needed, adjust the amount of reveal until the image height is correct. A general rule is that raising the front Spikes will raise the image height; lowering the front Spikes will lower the image height. This rule applies even if the installation surface is on furniture, a stand, or on the floor.

Section 2.7—Vent Plug

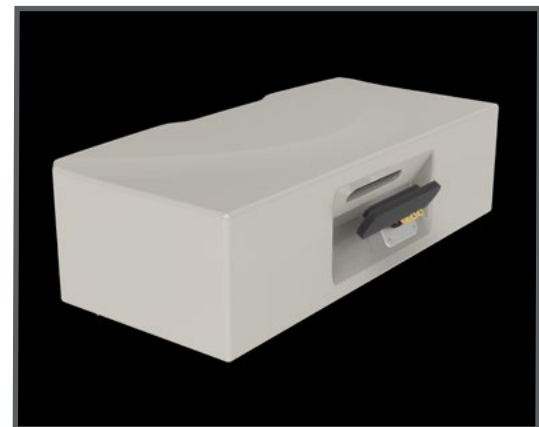
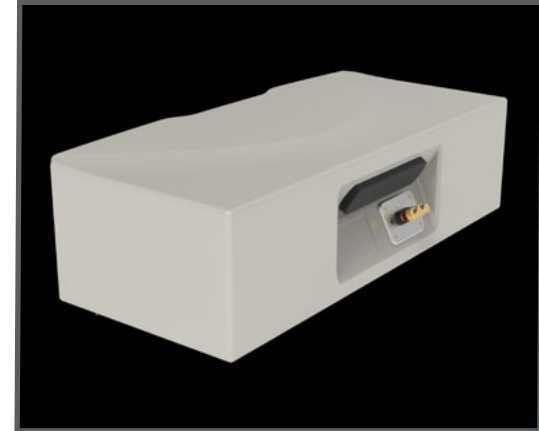
Unlike Wilson Audio’s floorstanding loudspeakers, which are typically installed in a relatively predictable environment with some distance from the room’s boundaries, WASAE Center was designed to be installed into more acoustically hostile areas, such as on-top of furniture, bookshelves, and counter tops.

WASAE Center features an acoustically tuned rear vent. This configuration offers the best combination of low noise and optimized vent contribution in the low frequency portion of the spectrum of a speaker the size of the WASAE Center. Occasionally, the combination of WASAE Center’s proximity to a shelf or a rear wall can reinforce this vent energy and cause undesirable nonlinearities in the low frequencies.

Wilson Audio’s engineers have provided a tool for these types of installations. WASAE Center is shipped with a Vent Plug installed. If the bass sounds integrated with the rest of the tonal spectrum, features dynamic authority and transient speed in the mid-bass, then there is little need to experiment with the Vent Plug. However, if the bass sounds unnatural or slow, these are symptoms that removing the Vent Plug may be advantageous in the installed environment.

Use the following process to experiment with the Vent Plug:

- Pick a musical track that has bass extension and dynamics. If possible, choose a thirty second (or so) section of the track, and repeat that section using an A/B repeat feature if possible. Listen to several repetitions without the Vent Plug installed.



Note: Wilson Audio has a “Setup CD” with the appropriate musical tracks optimized for this purpose. This CD is available on Wilson Audio’s On-Line Store.

- The Plug is formed to fit snugly in the vent. With the flat-surfaced end out, gently push the Vent Plug into the vent, making sure the flat flange of the Plug rests tightly against the surrounding edges.
- Restart the musical selection. Listen for improved bass integration, speed, and articulation. If the bass is more musically satisfying, this is the preferred configuration.

Note: This process benefits from repeated listening. Repeat the steps to ensure that your choice of vented or sealed yields the most musically satisfying results.

Section 2.8—Resistors

By removing the Resistor Access Cover on the bottom of WASAE Center, you gain access to the resistors. The Access Cover is secured by Allen Bolts. Use the supplied 1/8” Allen Bit to remove the bolts.

The Tweeter resistors have a total value of 3.15Ω (2 X 6.3Ω in parallel). The Mid-Woofer resistors have a total value of 0.63Ω (2 X 1.26Ω in parallel). The resistors provide precise level matching between the drivers. The resistors also act as ultra-high-quality fuses which “open” before a driver can be damaged by excess power or clipping. See the next page for useful resistor graphics.

Note: Only Wilson Audio replacement resistors should be used in your WASAE Center. Changing the value or brand of the resistors will have an adverse affect on the sonic performance of your loudspeakers and will void your Wilson Audio Warranty.

Section 2.9—Taking Care of Your Speaker

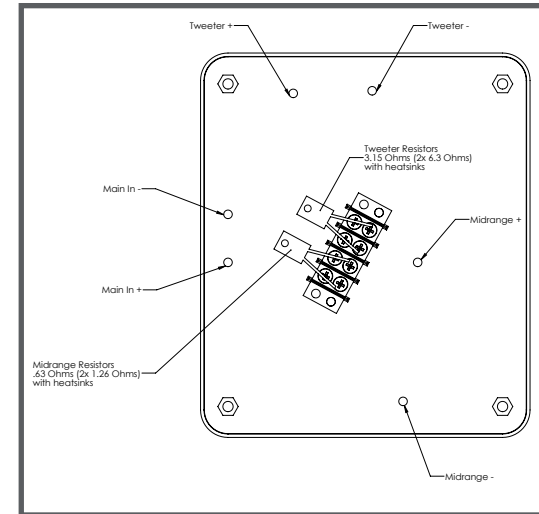
The WASAE Center loudspeaker undergoes a meticulous finishing process, which includes multiple layers of WilsonGloss paint and clear coat that are applied by hand. Following this, the loudspeaker is carefully hand polished to achieve a high luster finish.

Paint Finish

It is important that the delicate paint finish of the WASAE Center be dusted carefully with the provided dust cloth. We recommend that the following procedure be observed when dusting the speakers:

- Blow off all loose dust with compressed air.
- Using the dust cloth as a brush, gently whisk off any remaining loose dust. Dust the finish, using linear motions in one direction parallel to the floor. Avoid using circular or vertical motions.
- Shake out the dust cloth away from your system.

Because the paint requires a period of several months to fully cure, we recommend that no cleaning fluids, such as glass cleaners, be used during this initial period of time. When the paint is fully cured, heavy fingerprints and other minor smudges may be removed with a glass cleaner. Always use a soft dust cloth. **Stronger solvents are not recommended under any circumstances.** Consult your Dealer for further information if required. To maintain the high luster of the finish, periodic polishing may be desired. We recommend using the WilsonGloss Cleaning Kit found in the Wilson Audio On-Line Store.





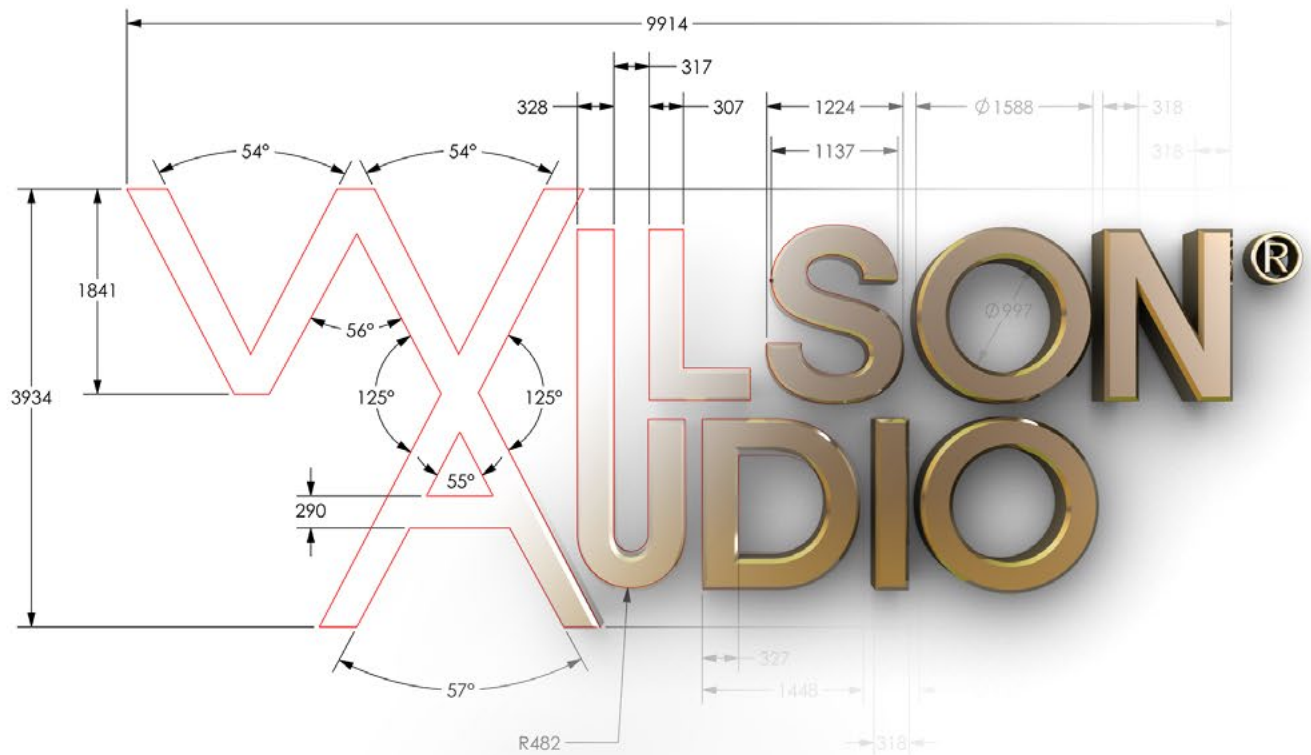
Grilles

The grille cloth is stretched tightly over the grille frame. Too much pressure or use of a hard plastic vacuum attachment could cause the grille material to tear, especially in the corners. Use compressed air and a sticky lint roller to safely remove dust off the grille material.

Often Wilson Audio speaker owners desire to change the look of their listening room by changing the color of their speaker grilles. In addition to black, Wilson Audio offers a variety of grille colors to compliment and/or contrast most WilsonGloss finishes. Contact your local Dealer for grille cloth samples or to order replacement grilles for your Wilson Audio speakers.

Break-in Period

All audio equipment will sound best after its components have been “broken in” for some period of time. Wilson Audio breaks in all woofers and mid-range drivers for approximately 8 hours. All drivers are then tested, calibrated, and matched for their acoustical properties. In your listening room, expect 25 to 50 percent of break-in to be complete after two hours of playing music at normal listening levels. Ninety percent of break-in is complete after 48 hours of playing. Playing a CD on repeat overnight can accomplish this task quickly.



SECTION 3—TECHNICAL INFORMATION

Section 3.1—Specifications

Enclosure Type: *X-Material / S-Material / Rear Vented*

Mid-Woofers: *5.75 inches (14.61 cm)*

Tweeter: *1 inch (2.54 cm)*

Sensitivity: *88 dB @ 1 Watt @ 1 meter @ 1 kHz*

Nominal Impedance: *4 ohms / minimum 3.9 ohms @ 198 Hz*

Minimum Amplifier Power: *20 Watts*

Frequency Response: *65 Hz - 31 kHz (+/- 3 dB)*

Overall Dimensions: *Height - 7 3/4 inches (19.62 cm) w/o spikes*

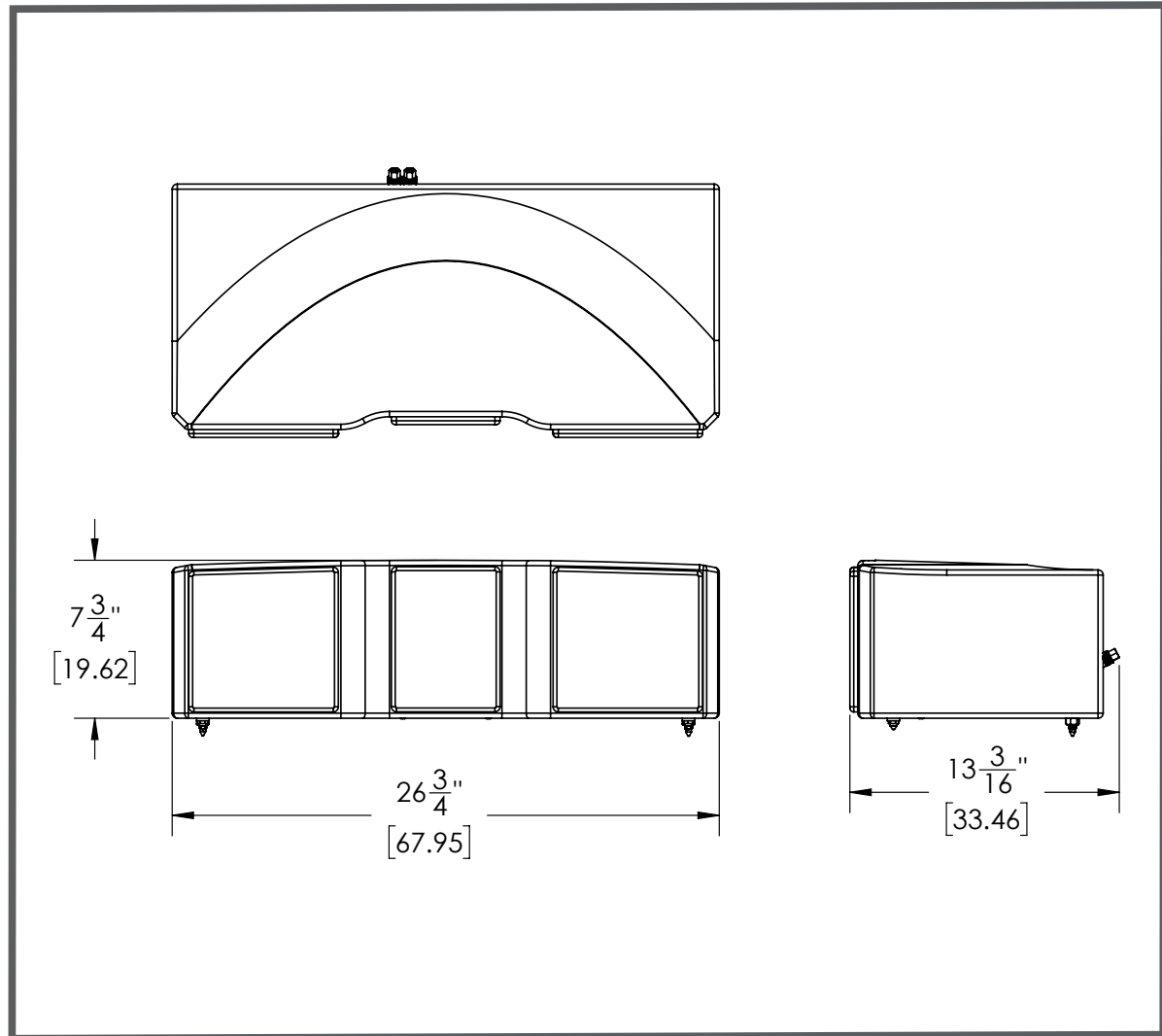
Width - 26 3/4 inches (67.95 cm)

Depth - 13 3/16 inches (33.46 cm)

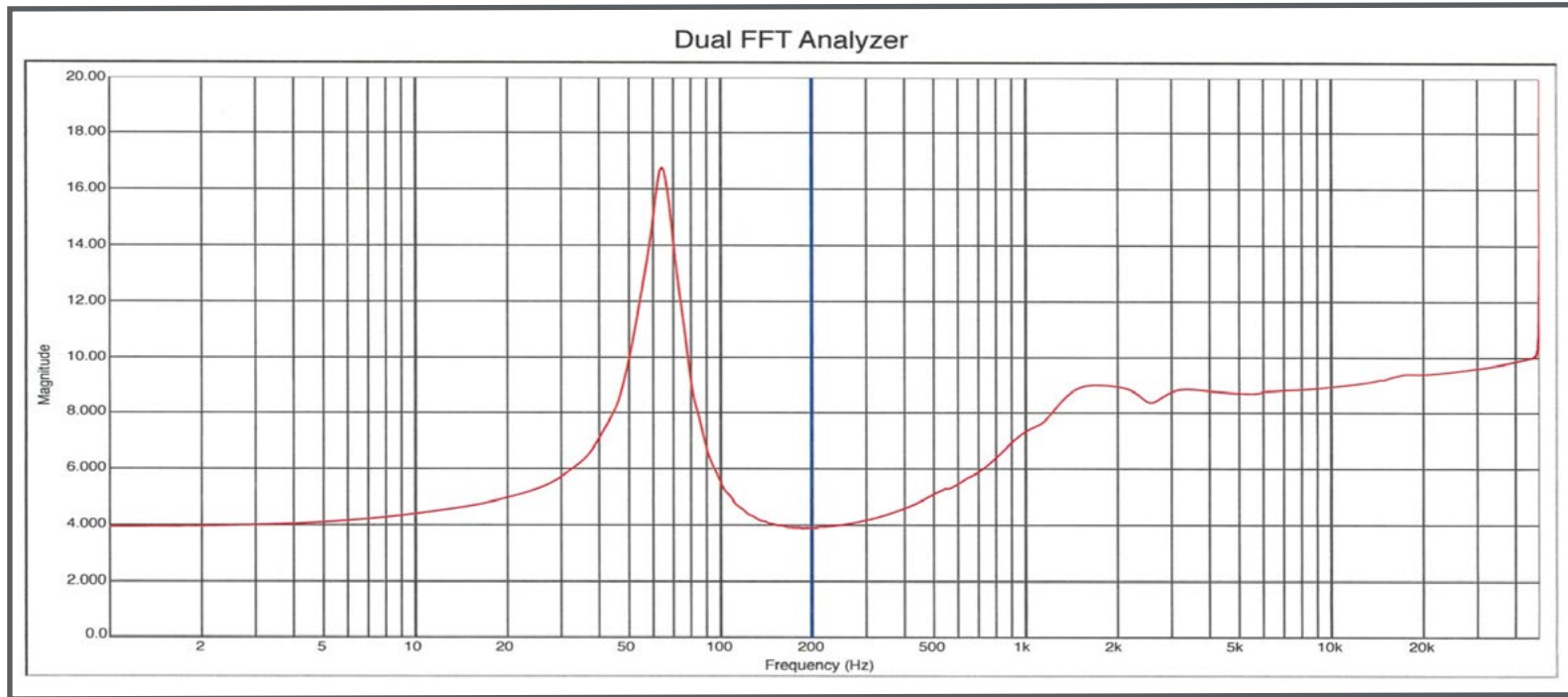
System Weight Per Channel: *57 lbs (25.85 kg)*

Total System Shipping Weight (approx.): *100 lbs (45.36 kg)*

Section 3.2—Graphical Dimensions



Section 3.3—WASAE Center Impedance Curve



Section 3.4—WASAE Center Phase Curve





SECTION 4—WARRANTY

Section 4—Warranty Details

Limited Warranty

Subject to the conditions set forth herein, Wilson Audio warrants its electronics to be free of manufacturing defects in material and workmanship for the Warranty Period. The Warranty Period is a period of 90 days from the date of purchase by the original purchaser, or if both of the following two requirements are met, the Warranty Period is a period of five (5) years from the date of purchase by the original purchaser:

Requirement No. 1. No later than 30 days after product delivery to the customer, the customer must have returned the Warranty Registration Form to Wilson Audio. Alternatively, the warranty may be filled out on-line.

Requirement No. 2. The product must have been professionally installed by the Wilson Audio Dealer that sold the product to the customer.

FAILURE TO COMPLY WITH EITHER REQUIREMENT NO. 1 OR REQUIREMENT NO. 2 WILL RESULT IN THE WARRANTY PERIOD BEING LIMITED TO A PERIOD OF 90 DAYS ONLY.

Conditions

This Limited Warranty is also subject to the following conditions and limitations. The Limited Warranty is void and inapplicable if the product has been used or handled other than in accordance with the instructions in the owner's manual, or has been abused or misused, damaged by accident or neglect or in being transported, or if the product has been tampered with or service or repair of the product has been attempted or performed by anyone other than Wilson Audio, an authorized Wilson Audio Dealer Technician or a service or repair center authorized by Wilson Audio to service or repair the product. Contact Wilson Audio at (801) 377-2233 for information on location of Wilson Audio Dealers and authorized service and repair centers. Most repairs can be made in the field. In instances where return to Wilson Audio's factory is required, the Dealer or customer must first obtain a return authorization. Purchaser must pay for shipping to Wilson Audio, and Wilson Audio will pay for shipping of its choice to return the product to purchaser. A RETURNED PRODUCT MUST BE ACCOMPANIED BY A WRITTEN DESCRIPTION OF THE DEFECT. Wilson Audio reserves the right to modify the design of any product without obligation to purchasers of previously manufactured products and to change the prices or specifications of any product without notice or obligation to any person.

Remedy

In the event that the product fails to meet the above Limited Warranty and the conditions set forth herein have been met, the purchaser's sole remedy under this Limited Warranty shall be to: (1) contact an authorized Wilson Audio Dealer within the Warranty Period for service or repair of the product without charge for parts or labor, which service or repair, at the Dealer's option, shall take place either at the location where the product is installed or at the Dealer's place of business; or (2) if purchaser has

timely sought service or repair and the product cannot be serviced or repaired by the Dealer, then purchaser may obtain a return authorization from Wilson Audio and at purchaser's expense return the product to Wilson Audio where the defect will be rectified without charge for parts or labor.

Warranty Limited to Original Purchaser

This Limited Warranty is for the sole benefit of the original purchaser of the covered product and shall not be transferred to a subsequent purchaser of the product, unless the product is purchased by the subsequent purchaser from an authorized Wilson Audio Dealer who has certified the product in accordance with Wilson Audio standards and requirements and the certification has been accepted by Wilson Audio, in which event the Limited Warranty for the product so purchased and certified shall expire at the end of the original Warranty Period applicable to the product.

Demonstration Equipment

Equipment, while used by an authorized Dealer for demonstration purposes, is warranted to be free of manufacturing defects in materials and workmanship for a period of five (5) years from the date of shipment to the Dealer. Demo equipment needing warranty service may be repaired on-site or, if necessary, correctly packed and returned to Wilson Audio by the Dealer at Dealer's sole expense. Wilson Audio will pay return freight of its choice. A returned product must be accompanied by a written description of the defect. Dealer owned demonstration equipment sold at retail within two (2) years of date of shipment to the Dealer is warranted to the first retail customer to be free of manufacturing defects in materials and workmanship for the same time periods as if the product had originally been bought for immediate resale to the retail customer. Wilson Audio products are warranted for a period of 90 days, unless extended to 5 years, as provided above, by return and filing of completed Warranty Registration at Wilson Audio within 30 days after product delivery to customer and the product was professionally installed by the Wilson Audio Dealer that sold the product to the customer.

Miscellaneous

ALL EXPRESS AND IMPLIED WARRANTIES NOT PROVIDED FOR HEREIN ARE HEREBY EXPRESSLY DISCLAIMED. ANY LEGALLY IMPOSED IMPLIED WARRANTIES RELATING TO THE PRODUCT SHALL BE LIMITED TO THE DURATION OF THIS LIMITED WARRANTY. THIS LIMITED WARRANTY DOES NOT EXTEND TO ANY INCIDENTAL OR CONSEQUENTIAL COSTS OR DAMAGES TO THE PURCHASER.

Some states do not allow limitations on how long an implied warranty lasts or an exclusion or limitation of incidental or consequential damages, so the above limitations or exclusions may not apply to you. This Limited Warranty gives you specific legal rights, and you may also have other rights, which vary from state to state.



- Replacement Resistors
- Books and Literature
- Custom Loudspeaker Covers
- Installation Tools and Accessories
- New Grilles and Diffraction Blankets
- WilsonGloss Care Products and Kits
- Wilson Audio Signature Apparel
- Upgrade Spikes and Binding Posts
- ... And More





WWW.WILSONAUDIO.COM

WILSON AUDIO

2233 MOUNTAIN VISTA LANE

PROVO, UTAH 84606

UNITED STATES OF AMERICA